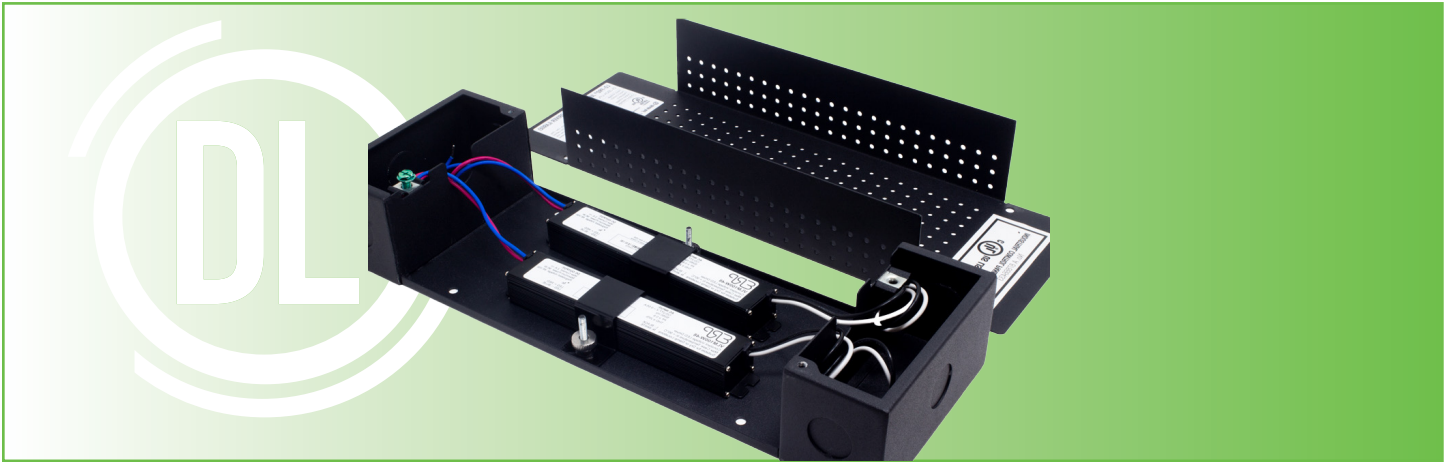




12VDC

24VDC

Item #	
Project	



DI-JBOX-LPL-VLM

COMPATIBLE DRIVERS

VLM Series Constant Voltage Drivers	VLM120W-12-LPL VLM200W-24-LPL
-------------------------------------	----------------------------------

OVERVIEW

The Multi-Driver Lo-Pro Junction Box is a great solution for installations requiring multiple drivers.

FEATURES

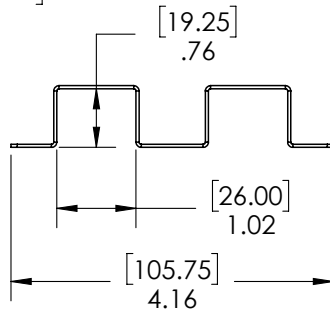
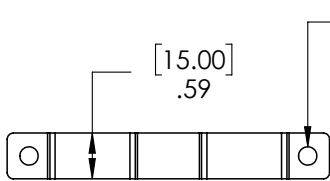
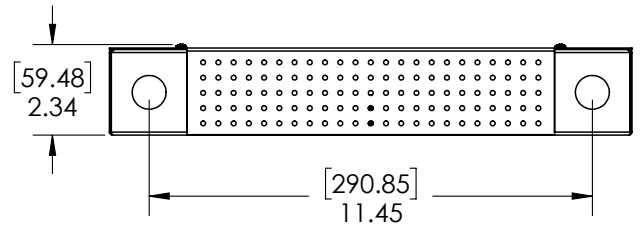
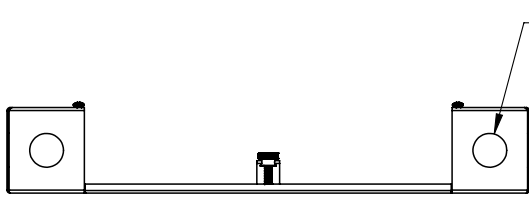
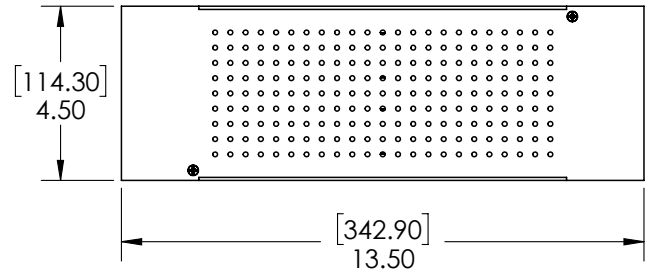
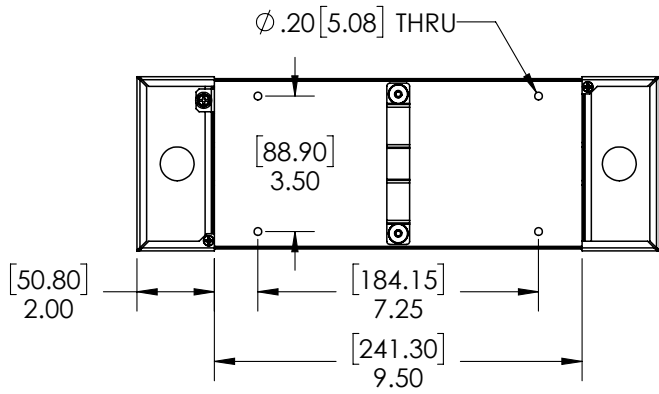
- For use with multiple VLM Drivers.
- UL Listed
- 5-Year Warranty
- NEMA 1 rated

SPECIFICATIONS

DI-JBOX-LPL-VLM	
Input Voltage	120-277VAC
Max Load (total)	12V/120W, 24V/200W
Max Load (each)	12V/60W, 24V/100W
Class 2 Certified	Yes
Ambient Temperature¹	-22 - 104°F (-30 - +40°C)
Operating Temperature²	-4 - 194°F (-20 - +90°C)
Environment	Indoor / Dry Location
Dimensions	13.5 x 4.50 x 2.38 in. (L x W x D)
Warranty	5 Years
Certifications <i>DI-JBOX-LPL</i>	<p>1. UL 2108 (UL# E469769) LED LOW VOLTAGE POWER UNIT CERTIFIED AS A LISTED LED LOW VOLTAGE POWER UNIT. OPTIONAL - ONLY APPLIES WHEN PURCHASED AS A LO-PRO JUNCTION BOX & DRIVER COMBO. SEE ORDERING OPTIONS ON PAGES 3-4. A UL E469769 STICKER WILL BE PLACED ON THE OUTSIDE OF THE LO-PRO BOX CERTIFYING THE COMBO AS A UL LISTED LED LOW VOLTAGE POWER UNIT.</p> <p>2. UL 508A (UL# E486215) INDUSTRIAL CONTROL PANEL TYPE 1 ENCLOSURE - INDOOR. CAN BE USED AS A STANDARD J-BOX FOR ANY COMPONENT. THIS CERT ALWAYS APPLIES TO THE LO-PRO BOX.</p> <p>3. UL 1598 (UL# E485321) LUMINAIRE FITTING CERTIFIED FOR FIELD INSTALLATION WITH CLASS 2 LED DRIVER MODELS HIGHLIGHTED ON PAGE S 3-4. THIS CERT ALWAYS APPLIES TO THE LO-PRO BOX.</p>

MULTI-DRIVER LO-PRO® JUNCTION BOX

MEASUREMENTS



ADDITIONAL RESOURCES

Multi-Driver Lo-Pro Junction Box INSTALLATION GUIDE

SAFETY / WARNINGS / DISCLOSURES

1. Install in accordance with national and local electrical code regulations.
2. This product is intended to be installed and serviced by a qualified, licensed electrician.
3. DO NOT modify product beyond instructions or warranty will be void.
4. Turn power OFF at main breaker before servicing or installing this product.
5. Proper heat dissipation will prolong the working lifespan of this product. Install in a well-ventilated area free from explosive gases and vapors.
6. Refer to the 'Static Characteristics Curve' if installing under low input voltage conditions to properly derate the power supply load
7. Refer to the 'Derating Curve' if nearing max. ambient temperature to properly derate the power supply load. Do not install product in an environment outside the listed ambient temperature.
8. Ensure a compatible LED fixture with the correct operating voltage is installed with this product.
9. To compensate for voltage drop, ensure applicable gauge in-wall rated wire is installed between driver and LED fixture.

NOTES

1. Do not install product in an environment outside the listed ambient temperature. Exceeding the maximum ambient temperature may result in damage.
2. Operating temperature is measured according to the minimum and maximum ambient temperature environment. Operating temperature is measured according to the minimum and maximum ambient temperature environment.

WARRANTY

Limited Warranty

The five (5) year limited warranty of this product begins from the date of shipment. The warranty of each item can be found in the 'Specifications' chart under 'Warranty'. This warranty does not include the additional accessories referenced in this specification sheet. Complete warranty details for fixtures and additional accessories are available at www.diodeled.com/limited-warranty/ within the Policies section. For warranty related questions please contact product support.

Consumer's Acknowledgment

Diode LED stands behind its products when they are used properly and according to our specifications. By purchasing our products, the purchaser agrees and acknowledges that lighting design, configuration and installation is a complex process, wherein seemingly minor factors or changes in layout and in-field adjustments can have a significant impact on an entire system. Choosing the correct components is essential. Diode LED is able to work with the original purchaser to make an appropriate product selection to the extent of the limited information that the customer can provide, but it is virtually impossible for Diode LED to design a system that foresees every unknown factor. For this reason, this Warranty does not cover problems caused by improper design, configuration or installation issues. Any statement from a Diode LED employee or agent regarding a customer's bill of goods and/or purchase order is NOT an acknowledgment that the products purchased are designed and configured correctly. The purchaser agrees and acknowledges that it is the customer's responsibility to adhere strictly to all information contained in the Product Specification Sheets.

There is often more than one way to design, configure and layout an LED lighting application properly to achieve the same lighting effect. Diode LED strongly recommends that licensed professionals be used in the design and installation of lighting systems that include Diode LED products. The specifications include important information that a designer and installer should carefully review and strictly follow. Qualified designers and certified and/or licensed installers, with access to the final installation environment, customer goals, and Diode LED product specifications can make the requisite decisions appropriate for a successful finished lighting application.



© 2020 Elemental LED, Inc. All rights reserved.

Specifications are subject to change without notice.

Toll Free: 877.817.6028 | Fax: 415.592.1596 | www.DiodeLED.com | info@DiodeLED.com