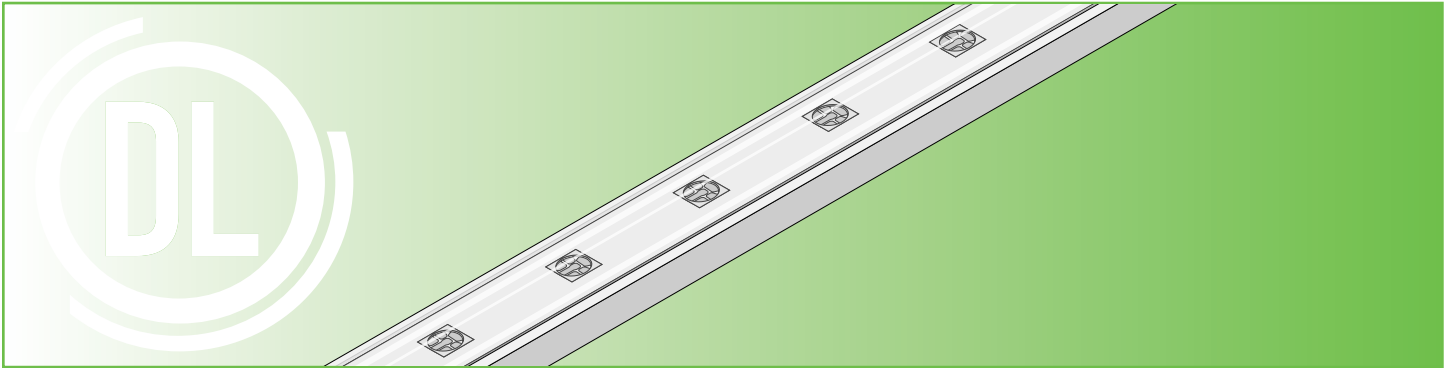




Item # _____

Project _____



HLSP-RGB	
Voltage/Wattage	24VDC / 3W/ft.
Lumens²	16 (blue), 60 (green), 22 (red), 96 (RGB)
Max. Run²	26 feet
Cut Points	5.625 in
LED Chips	7 per cut point
CRI	N/A
Dimmable	Yes
Field Cuttable	No
Dimensions	0.47 x 0.13 in. (W x H) (Strip Only), 0.60 x 0.50 in. (W x H) (w/ Endcap)
Environment*	Outdoor / Wet Location / IP68
Certification	UL Listed 2108 & 676 IP68 Submersible
Warranty	5-Year Warranty

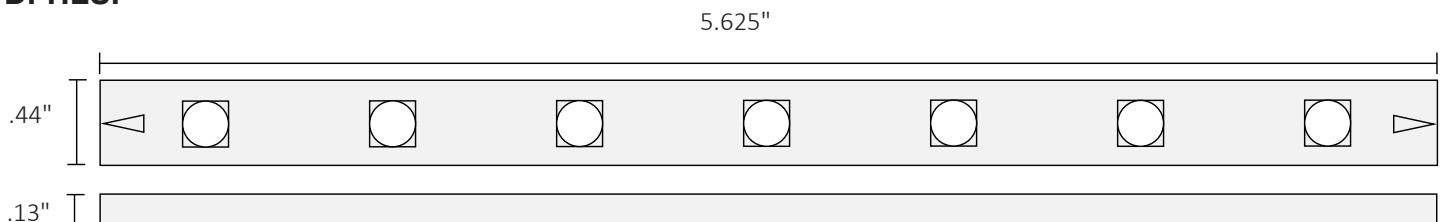
FEATURES

- UL Listed 2108 certification allows for installations indoor, outdoor, wet locations, and submerged in water
- UL Listed 676 allows for installation in pools, spas, and fountains
- Safe for chlorine treated installations.
- Resistant to direct sunlight and UV radiation

MECHANICAL DIAGRAMS

HYDROLUME[®] SLIM

DI-HLSP



HYDROLUME® SLIM RGB LED Strip Light

SPECIFICATION SHEET

SKU BUILDER

DI	-	24V	-		-	RGB	-		-		-	
		Voltage		Model		Length		Driver (Optional)		MOUNTING (Optional)		

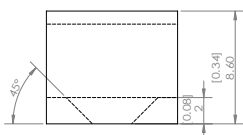
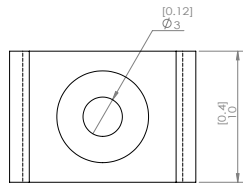
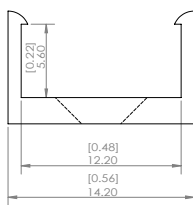
MODEL	LENGTH	DRIVER	MOUNTING
HLSP	Length (in.)	CONSTANT VOLTAGE (CV)	MOUNTING BRACKET (MBR)
			CHANNEL (CHN)

Example: DI-24V-HLSP-RGB-32-CV-CHN = Diode, 24 Volt, HYDROLUME® SLIM RGB, 32 foot spool, with Constant Voltage Driver, and Mounting Channel

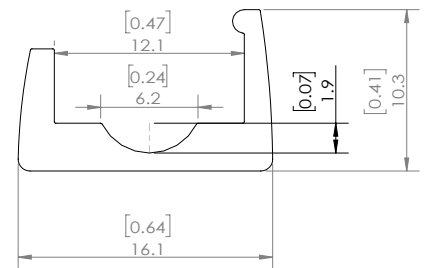
ADDITIONAL ACCESSORIES

Accessories listed below are fully compatible with our HYDROLUME® SLIM product line. Further information on these products and more accessories can be found in our latest catalog or online at www.DiodeLED.com.

HYDROLUME® SLIM
Mounting Bracket (MBR)
DI-HLS-MTBR



HYDROLUME® SLIM Mounting
Channel (CHN)
(Must be used to comply with UL 676
(Length: 39.4in.)
DI-HLS-MTCH



HYDROLUME[®] SLIM RGB LED Strip Light

SPECIFICATION SHEET

COMPATIBLE PRODUCTS

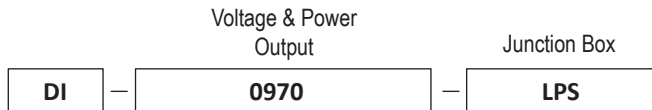
The following Listed LED Drivers are recommended for compatibility and to meet NEC code when installed according to specifications. For additional LED Driver options see Diode LED's product page at: <https://www.diodeled.com/products/led-power-supplies.html>

ON/OFF, DMX, & PWM CONTROL

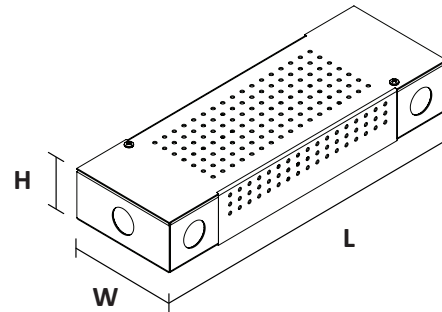
LO-PRO[®] JUNCTION BOX & DRIVER COMBO - 24V CONSTANT VOLTAGE LED DRIVER

Use Constant Voltage Drivers to power your lighting system. Compatible with Standard 120VAC On/Off Switches, REIGN[®] Low Voltage Dimmers, TOUCHDIAL[™] Control System, DMX Decoders, and PWM Controls.

[SPEC SHEET](#)



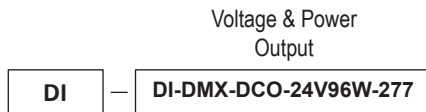
SKU	L - LENGTH	W - WIDTH	H - HEIGHT
DI-0970-LPS	11.25 in.	3.75 in.	1.90 in.
DI-CV-MW24V60W-277-LPS	11.25 in.	3.75 in.	1.90 in.
DI-CV-MW24V90W-277-LPS	11.25 in.	3.75 in.	1.90 in.
DI-0954-LPL	13.5 in.	4.5 in.	2.37 in.



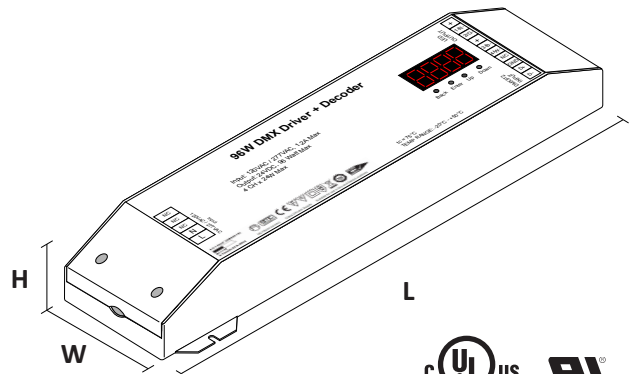
DMX DRIVER DECODER DRIVER & DECODER COMBO - 24V CONSTANT VOLTAGE LED DRIVER

Use Constant Voltage Drivers to power your lighting system. Compatible with DMX Color Controllers.

[SPEC SHEET](#)



SKU	L - LENGTH	W - WIDTH	H - HEIGHT
DI-DMX-DCO-24V96W-277	9 in.	2.5 in.	1.3 in.



HYDROLUME® SLIM RGB LED Strip Light

SPECIFICATION SHEET

SPECIFICATIONS

- Input: 24VDC Constant Voltage
- LED Chip Type: 5050
- LED Chip Beam Angle: 120°
- Material: UV/IR protected TPU
- Mounting (sold separately): Mounting Bracket, and Mounting Channel
- Connections: Leads: 18/4 AWG SJTOW
- Ambient Temp⁵: -4 - 122°F (-20 ~ 50°C)
- Operating Temp⁶: -4 - 176°F (-20 ~ 80°C)
- Flammability⁷: Flame retardant

COMPLIANCE & REGULATORY APPROVALS

Safety

- UL Listed 2108 Low Voltage Lighting System / Low Voltage Luminaire. UL 1598 / CSA 250.0-08, UL 8750. UL 879 / CAN/CSA-C22.2 no. 207-M89. Certified for United States and Canada. File # E469769.
- UL 676 Underwater Luminaires / CAN/CSA C22.2 No. 89-1976 / UL 8750. This certification conforms to Article 680 and 682 of the National Electrical Code® for installation in swimming pools, fountains, spas, natural and artificially made bodies of water. HYDROLUME MUST be installed with Mounting Channel (DI-HLS-MTCH) when installed underwater.

Performance

- LED chip data measured in accordance to IES LM-80-08.
- Photometric & Colorimetry data measured in accordance to IES LM-79-08, in Elemental LED's Innovation Lab.

COMPATIBLE DRIVERS

Additional information on compatible Drivers can be found on the Diode LED web site at: www.DiodeLED.com.

SPECIFYING?

Note: The compatible products listed in this Specification Sheet are provided for reference only. For complete specifications of compatible products, click on the [SPEC SHEET](#) links provided.

1. Requests for custom lengths of Strip Light will be cut to the nearest (*lower*) cut point. (Example: DI-24V-HLSP-RGB-CSTM-15' 3" would be cut to 180 inches (ie. 32 cut points @ 5.625" each)
2. Lumen value measured in accordance to IES LM-80-08. LED chips have a luminous flux range with a tolerance of +/- 5%.
3. Each maximum run requires a dedicated power feed from the driver. Do not extend beyond the recommended maximum run length.
4. Actual efficacy value is dependent to specified LED driver (power supply). An estimated efficacy value can be calculated as follows: Lumen value divided by average power consumption per foot.
5. Do not install product in an environment outside the listed ambient temperature. Exceeding the maximum ambient temperature may damage LED chips, reduce the total lamp life, lumen output, and/or adversely impact color consistency.
6. Operating temperature is measured according to the minimum and maximum ambient temperature environment.
7. This product has been tested and passed glow-wire flammability tests (GWFI index) at 650°C/1200°F, providing an extra level of safety for common areas, hospitality, and areas of high risk fire.

HYDROLUME® SLIM RGB LED Strip Light

SPECIFICATION SHEET

ADDITIONAL INFORMATION

- HYDROLUME® SLIM RGB LED STRIP LIGHT Installation Guide

SAFETY / WARNINGS / DISCLOSURES

1. Install in accordance with national and local electrical code regulations.
2. This product is intended to be installed and serviced by a qualified, licensed electrician.
3. Only install with a listed Class 2 DC Constant Voltage LED Driver.
4. Do not modify or disassemble product beyond instructions or this warranty will be void.
5. Actual color may vary from what is pictured above and on other print materials due to the limitations of photographic processes.
6. We reserve the right to modify and improve the design of our fixtures without prior notice. We cannot guarantee to match existing installed fixtures for subsequent orders or replacements in regards to product appearance, CCT, or lumen output.

WARRANTY

Limited Warranty

This product has a five (5) year limited warranty from the date of shipment. This warranty does not include the additional accessories referenced in this specification sheet. Complete warranty details for fixtures and additional accessories are available at www.diodeled.com/limited-warranty/ within the Policies section. For warranty related questions please contact product support.

Consumer's Acknowledgment

Elemental LED, Inc. stands behind its products when they are used properly and according to our specifications. By purchasing our products, the purchaser agrees and acknowledges that lighting design, configuration and installation is a complex process, wherein seemingly minor factors or changes in layout and infield adjustments can have a significant impact on an entire system. Choosing the correct components is essential. Elemental LED is able to work with the original purchaser to make an appropriate product selection to the extent of the limited information that the customer can provide, but it is virtually impossible for Elemental LED to design a system that foresees every unknown factor. For this reason, this Warranty does not cover problems caused by improper design, configuration or installation issues. Any statement from an Elemental LED employee or agent regarding a customer's bill of goods and/or purchase order is NOT an acknowledgment that the products purchased are designed and configured correctly. The purchaser agrees and acknowledges that it is the customer's responsibility to adhere strictly to all information contained in the Product Specification Sheets.

There is often more than one way to design, configure and layout an LED lighting application properly to achieve the same lighting effect. Elemental LED strongly recommends that licensed professionals be used in the design and installation of lighting systems that include Elemental LED products. The specifications include important information that a designer and installer should carefully review and strictly follow. Qualified designers and certified and/or licensed installers, with access to the final installation environment, customer goals, and Elemental LED product specifications can make the requisite decisions appropriate for a successful finished lighting application.



© 2019 Elemental LED, Inc. All rights reserved.
Specifications are subject to change without notice.

Toll Free: 877.817.6028 | Fax: 415.592.1596 | www.DiodeLED.com | info@DiodeLED.com